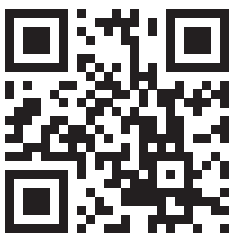




# ASSEMBLY MANUAL

## Modular Chair Series



Thank you for purchasing VaraMora by Patiova.  
This manual shows how to assemble the items shown below. Knowing how to assemble these pieces will prepare you for assembling any configuration you may have purchased.



**CHAIR WITH ARMS**



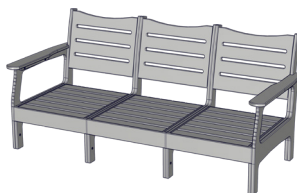
**CHAIR WITHOUT ARMS -  
CENTER CHAIR**



**END CHAIR - RIGHT ARM**



**END CHAIR - LEFT ARM**



**COUCH**



**CORNER SECTIONAL**

# Table of Contents

---

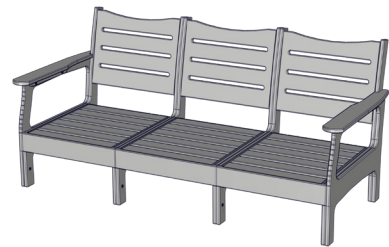
## Arm Chair Assembly

Pages 4 - 8



## Couch Assembly

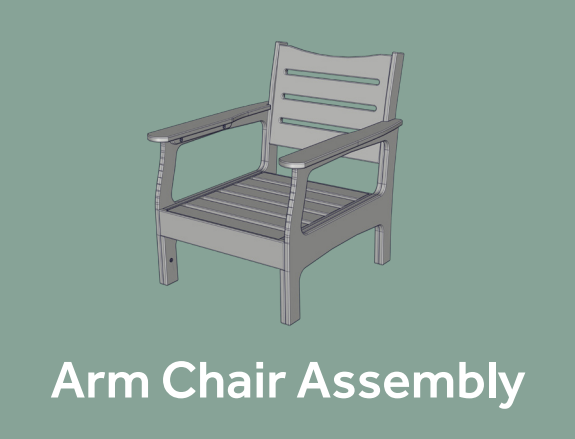
Pages 9 - 16



## Corner Sectional Assembly

Pages 18 - 24





# Getting Started

## Arm Chair Assembly

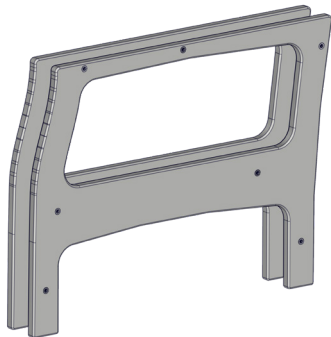
### TOOLS INCLUDED

Allen Wrench

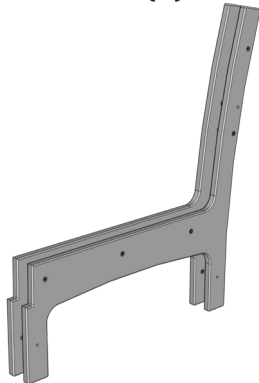


### ARM CHAIR PARTS

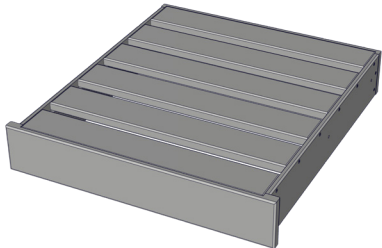
Arm Rest Sides (2)



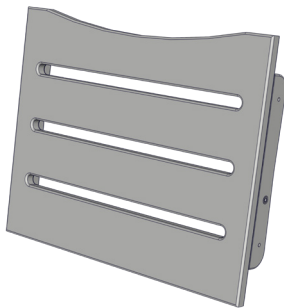
Chair Sides (2)



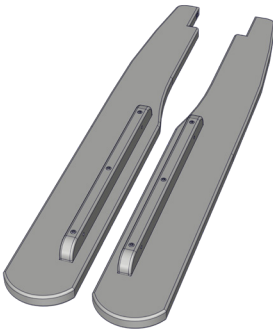
Seat Assembly (2)



Back Assembly (1)



Arm Rests (2)



### HARDWARE

1 1/4" Bolts (12)



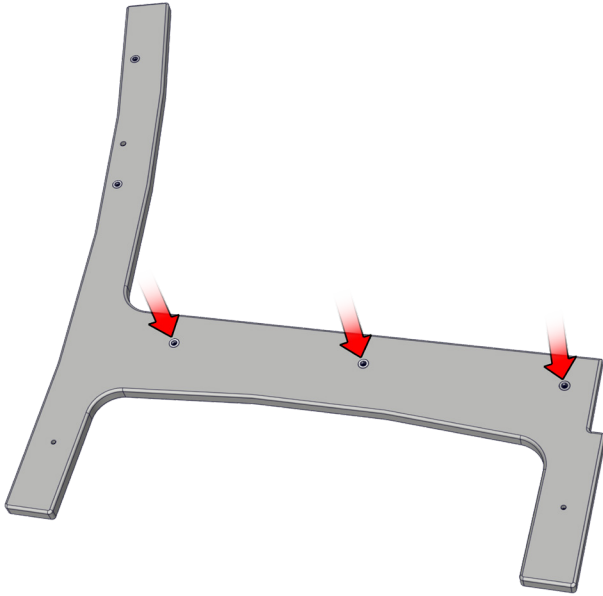
2" Bolts (8)



## STEP 1

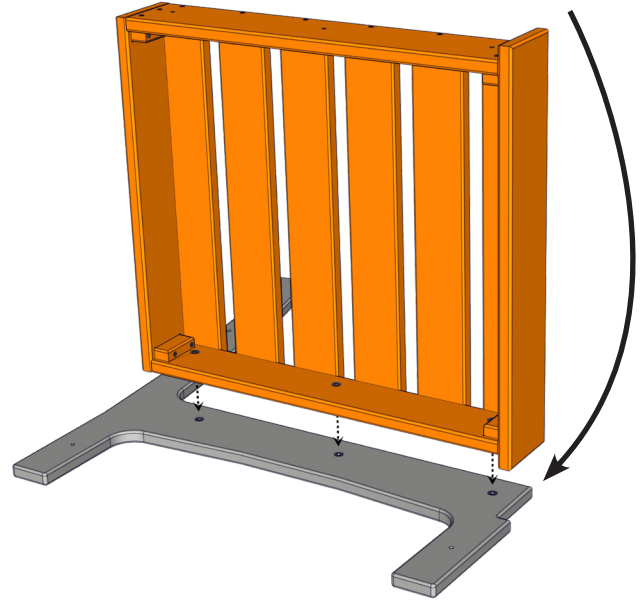
Begin the assembly by locating the chair side pieces. These come in a left and right version, place the right side on the ground as shown below.

The three insert nuts for the seat should be facing up.



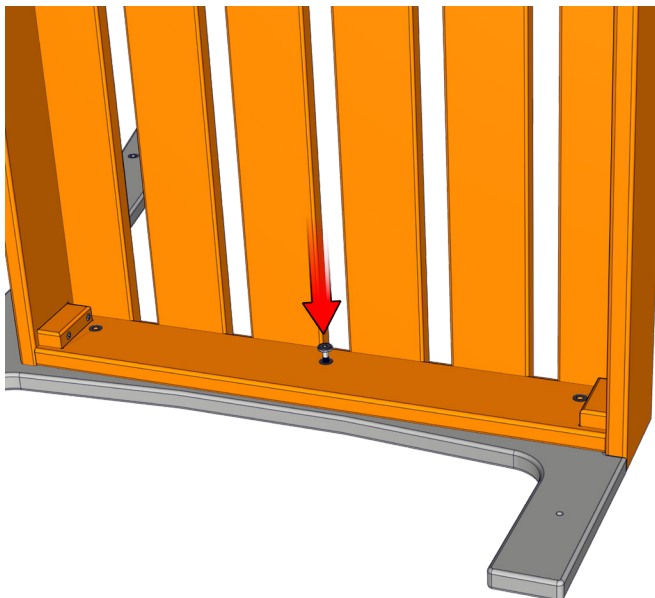
## STEP 2

Place the seat assembly on the chair side and align the holes. The front of the seat assembly has a tab that will fit into the notch on the front of the chair side.



## STEP 3

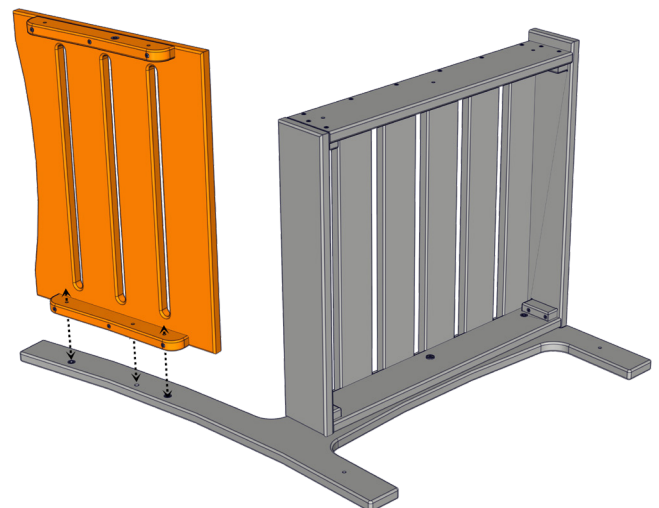
Fasten the seat assembly to the chair side using one (1) 1 ¼" bolt through the center pre-drilled hole. Only finger tighten all the bolts for now.



## STEP 4

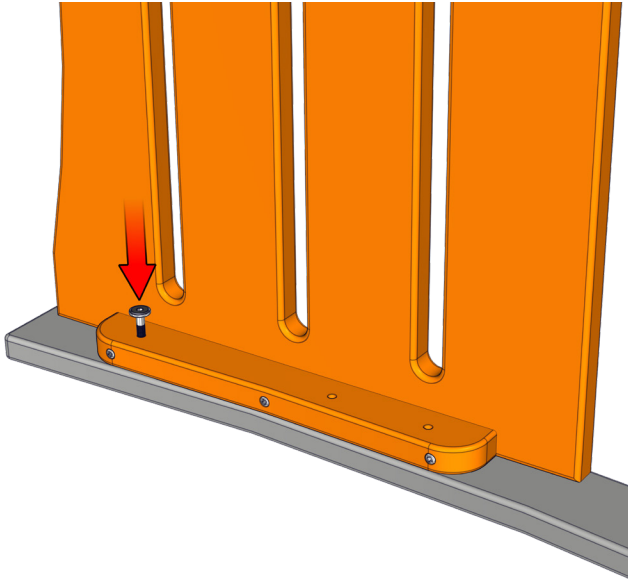
Place the back assembly on the chair side and align the three holes.

The top of the chair assembly is curved, make sure it is facing in the right direction.



## STEP 5

Fasten the back assembly to the chair side using (1) 1 ¼" bolt through the top pre-drilled hole.



## STEP 6

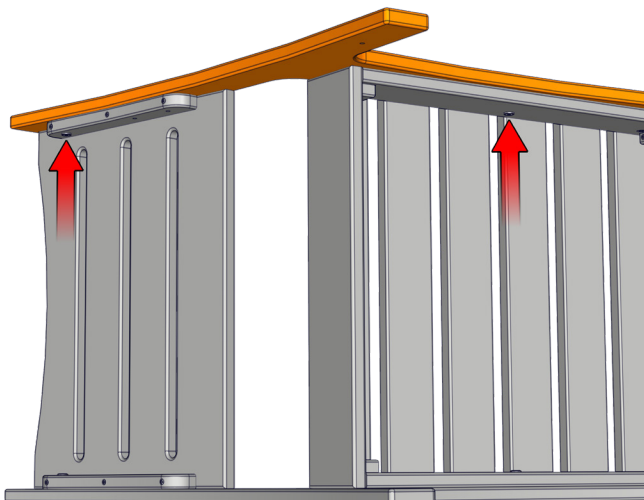
Place the left chair side in position and align the holes on the back and seat assembly.

**Note:** The nut inserts on this piece will need to be facing in towards the chair.



## STEP 7

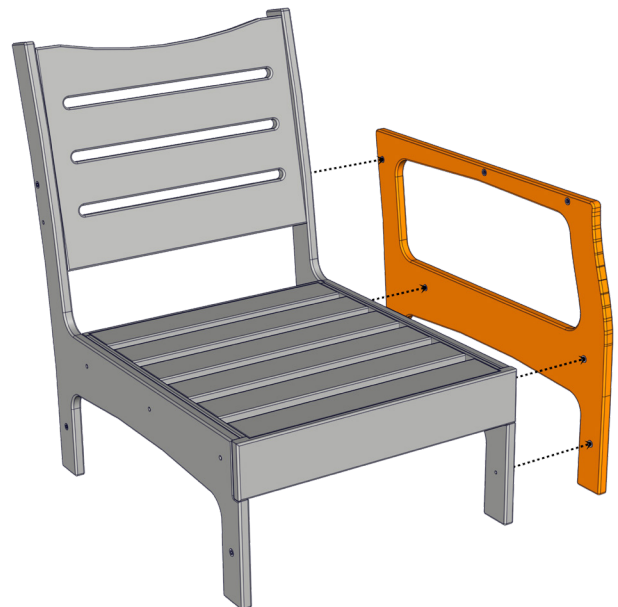
Use two (2) 1 ¼" bolts to fasten the the chair side using the same pre-drilled holes from the previous steps.



## STEP 8

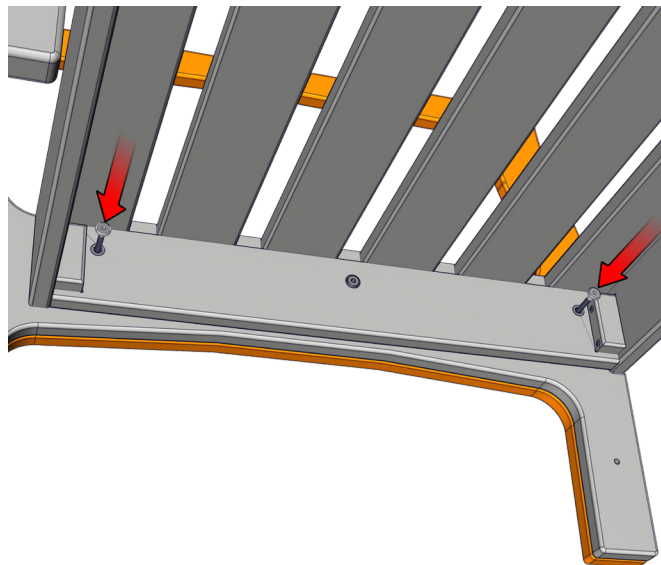
Set the chair upright and place the right arm rest side in position.

The arm rest sides have a left and right version as well, the right version will have the nut inserts facing in.



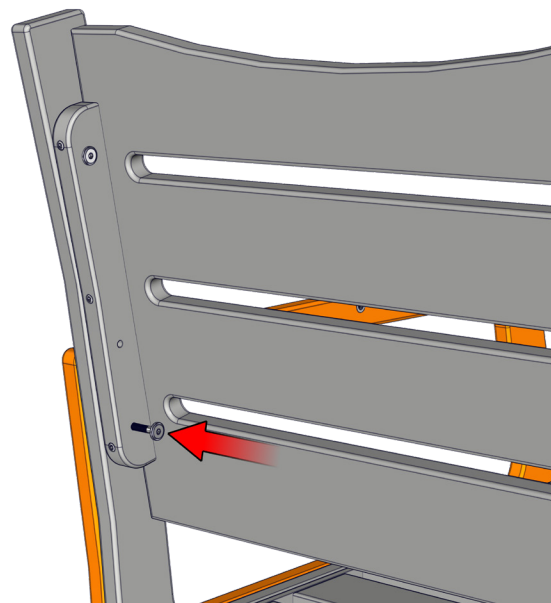
## STEP 9

Fasten the arm rest side to the chair using two (2) 2" bolts through the two remaining pre-drilled holes in the seat assembly.



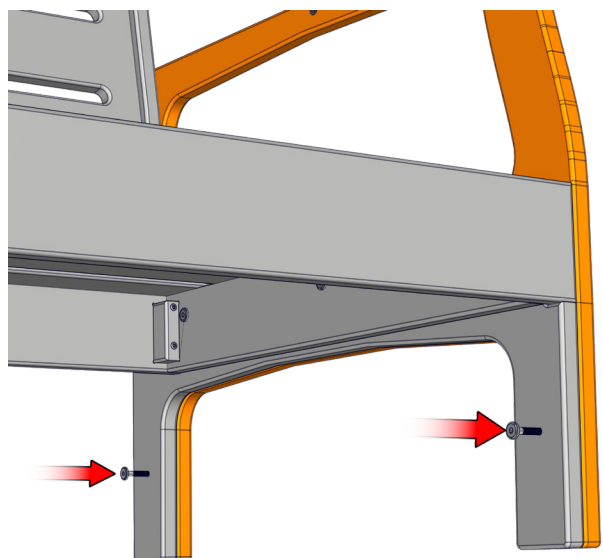
## STEP 10

Fasten the back assembly and the arm rest side together using one (1) 2" bolt through the bottom pre-drilled hole on the back assembly.



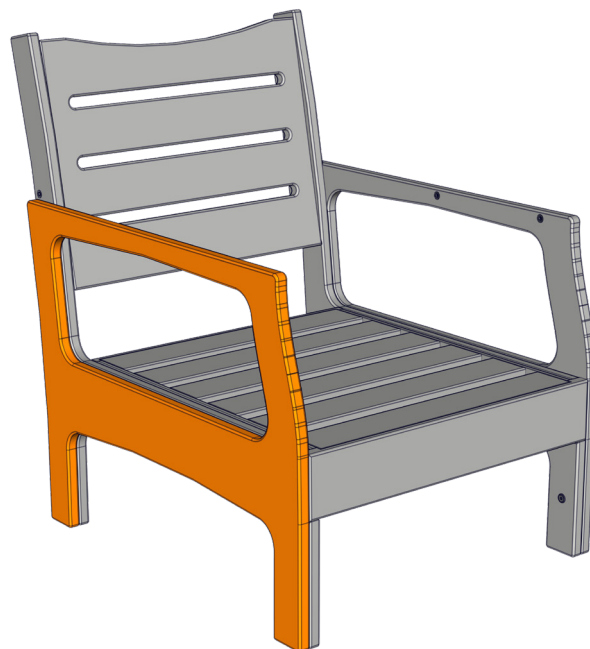
## STEP 11

Fasten the two chair side pieces together using two (2) 1 1/4" bolts through the pre-drilled holes on the inside chair side piece.



## STEP 12

Place the left arm rest side in position and repeat steps 9 through 11 to fasten it.



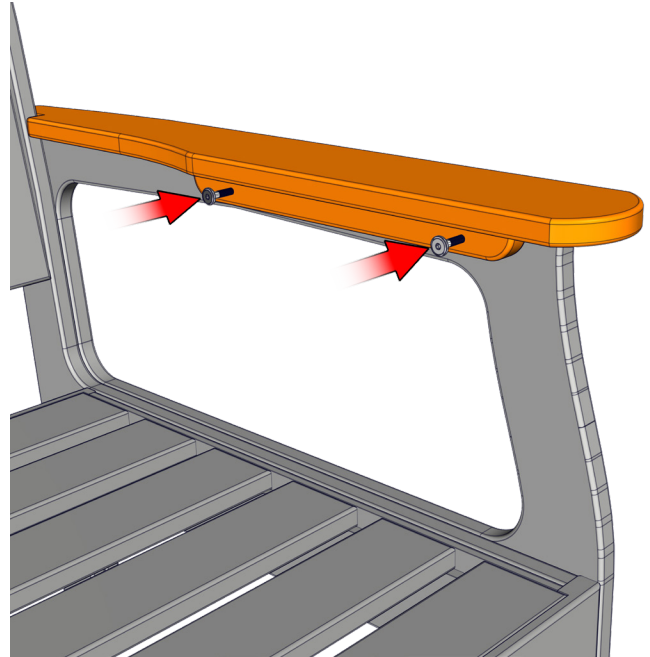
## STEP 13

Place the two arm rest pieces in position. These have a left and right version, make sure they fit correctly.



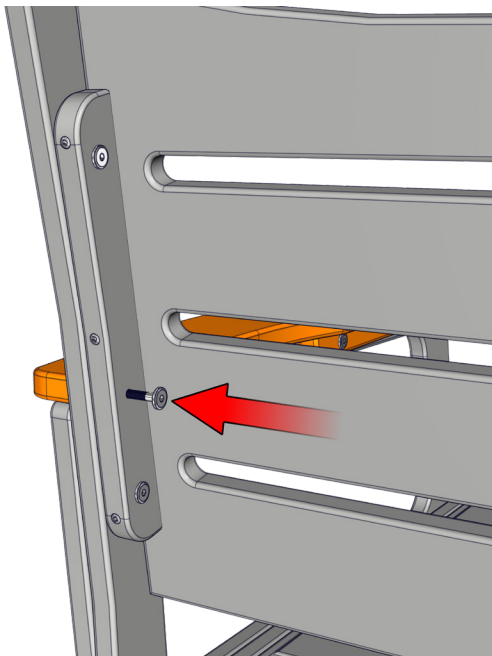
## STEP 14

Fasten the arm rests to the chair sides using two (2) 1 ¼" bolts through each arm rest.



## STEP 15

Use 2" bolts through the center pre-drilled holes on the back rest assembly to finish fastening the arm rests.



## STEP 16

Make sure the chair sits level then tighten all the bolts.







## Couch Assembly

# Getting Started

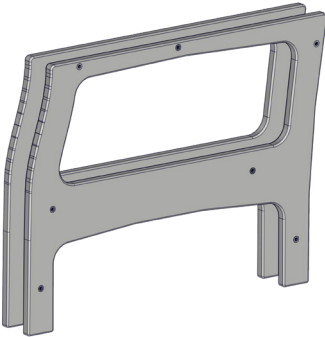
### TOOLS INCLUDED

Allen Wrench

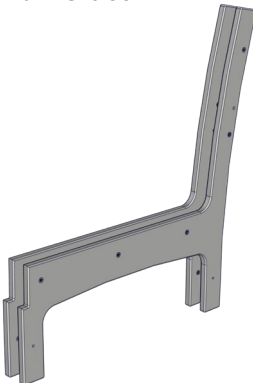


### COUCH PARTS

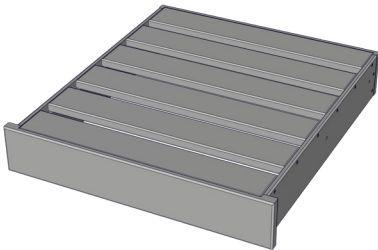
Arm Rest Sides



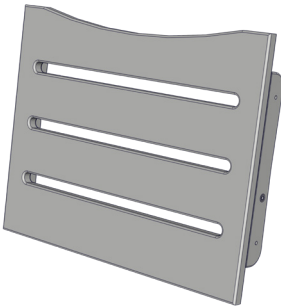
Chair Sides



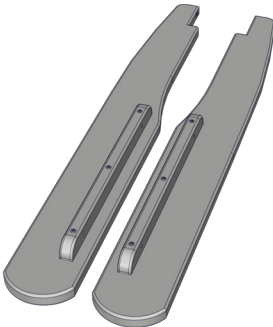
Seat Assembly



Back Assembly



Arm Rests



### HARDWARE

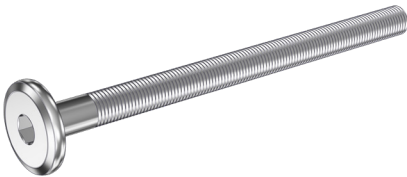
1 1/4" Bolts



2" Bolts



3" Bolts



## END CHAIR ASSEMBLY

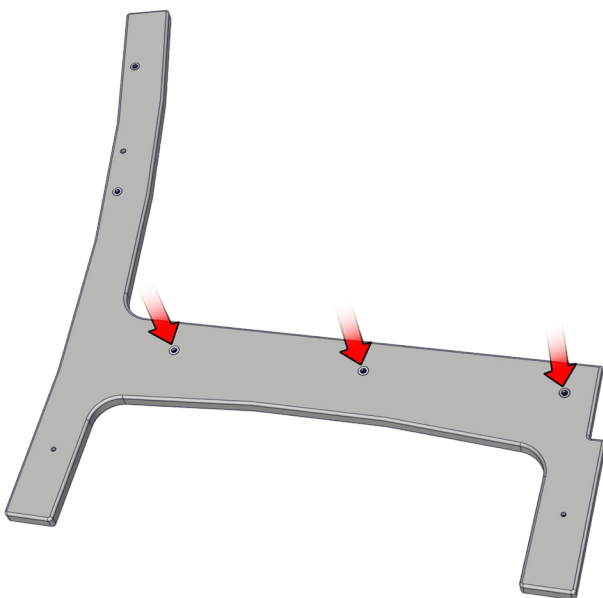
The couch assembly will begin with one of the end chairs. You will need to build a left and a right version.



### STEP 1

Begin the assembly by locating the chair side pieces. These come in a left and right version, place the right side on the ground as shown below.

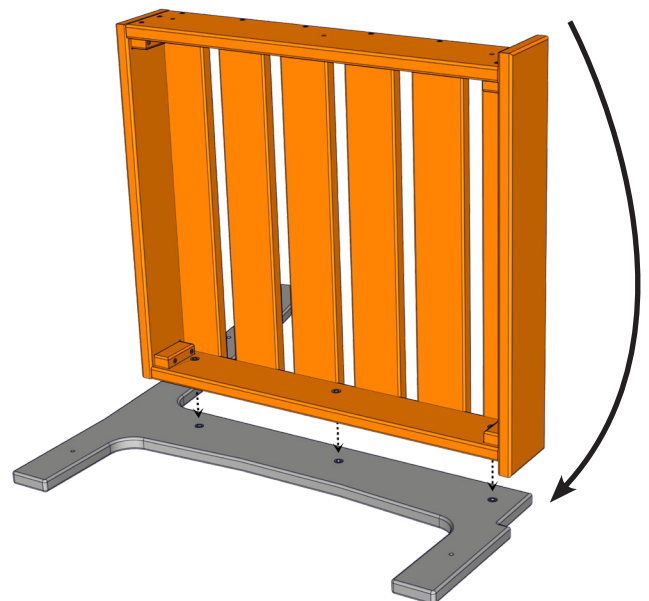
The three insert nuts for the seat should be facing up.



### STEP 2

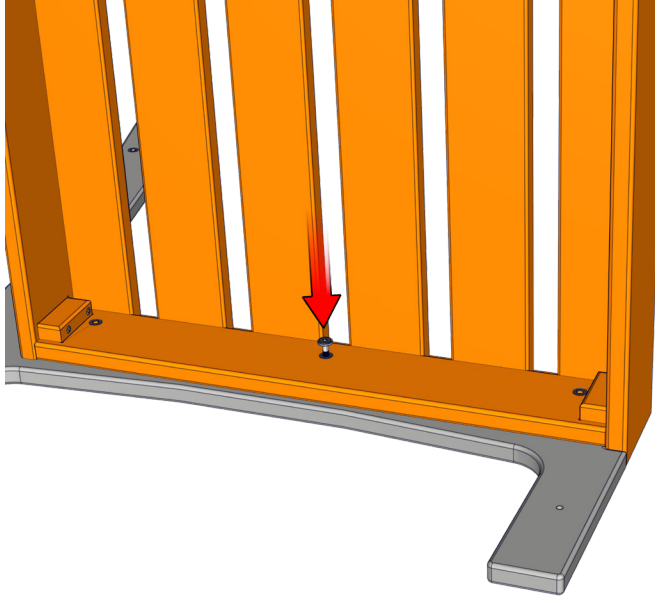
Place the seat assembly on the chair side and align the three holes.

The front of the seat assembly has a tab that will fit into the notch on the front of the chair side.



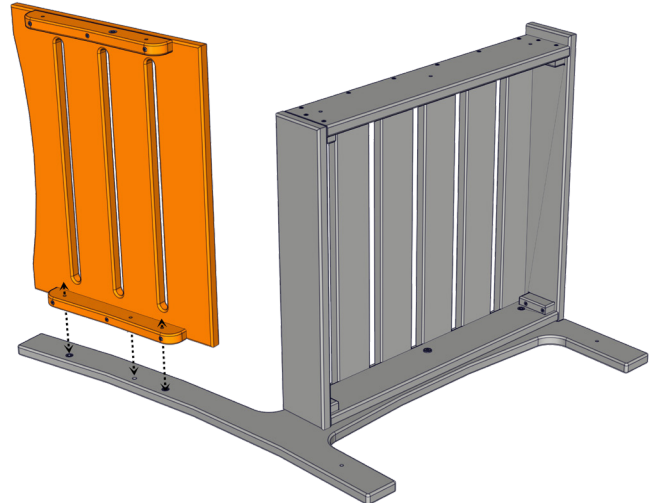
## STEP 3

Fasten the seat assembly to the chair side using one (1) 1 ¼" bolt through the center pre-drilled hole. Only finger tighten all the bolts for now.



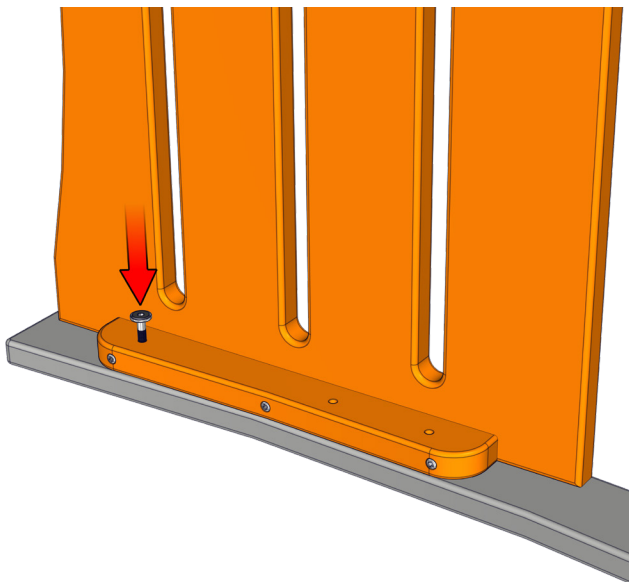
## STEP 4

Place the back assembly on the chair side and align the three holes. The top of the chair assembly is curved, make sure it is facing in the right direction.



## STEP 5

Fasten the back assembly to the chair side using one (1) 1 ¼" bolt through the top pre-drilled hole.



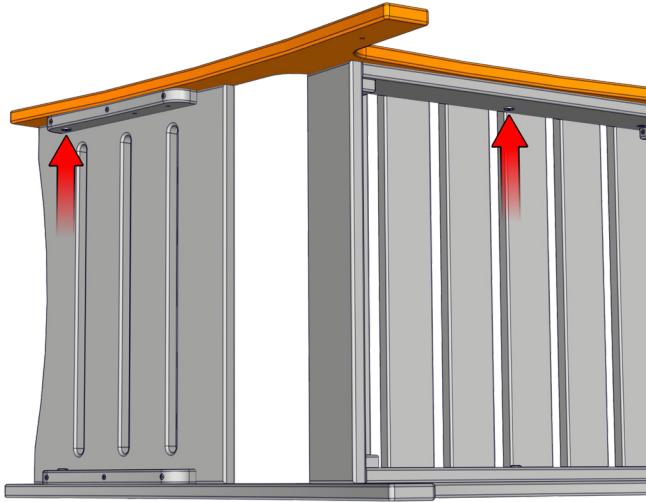
## STEP 6

Place the left chair side in position and align the holes on the back and seat assembly. **Note:** The nut inserts on this piece will need to be facing in towards the chair.



## STEP 7

Use two (2) 1 ¼" bolts to fasten the the chair side using the same pre-drilled holes from the previous steps.



## STEP 8

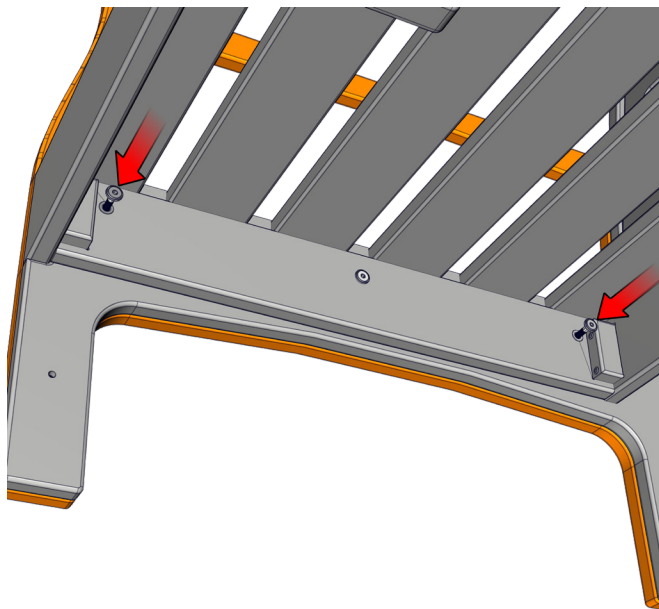
Set the chair upright and place the left arm rest side in position.

The arm rest sides have a left and right version as well, the left version will have the nut inserts facing in.



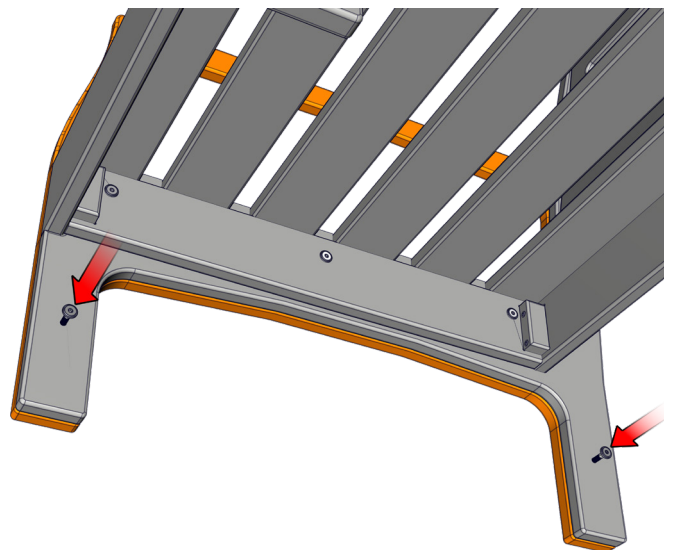
## STEP 9

Fasten the arm rest side to the chair using two (2) 2" bolts through the two remaining pre-drilled holes in the seat assembly.



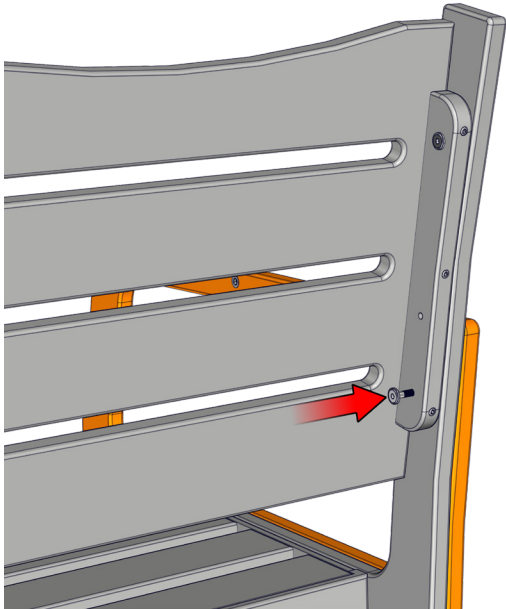
## STEP 10

Fasten the two chair side pieces together using two (2) 1 ¼" bolts through the pre-drilled holes on the inside chair side piece.



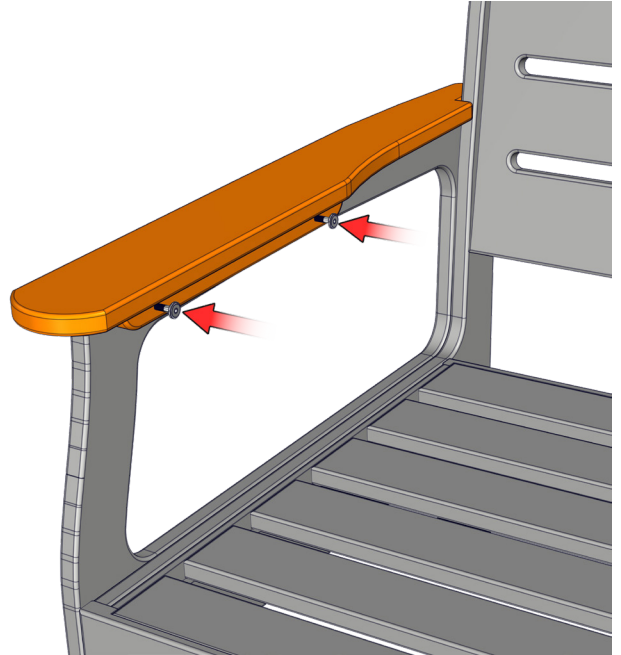
## STEP 11

Fasten the back assembly and the arm rest side together using one (1) 2" bolt through the bottom pre-drilled hole on the back assembly.



## STEP 12

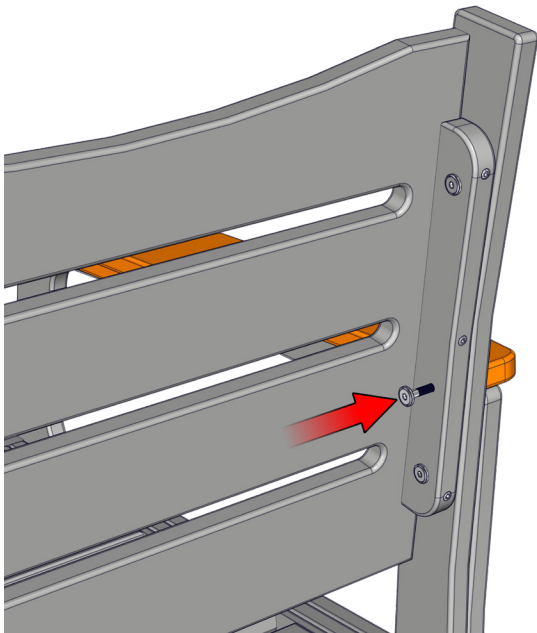
Place the left arm rest in position and align it correctly. Fasten the arm rest to the chair side using two (2) 2" bolts through the pre-drilled holes in the arm rest.



## STEP 13

Use one (1) 2" bolt through the center pre-drilled hole on the back rest assembly to finish fastening the arm rest.

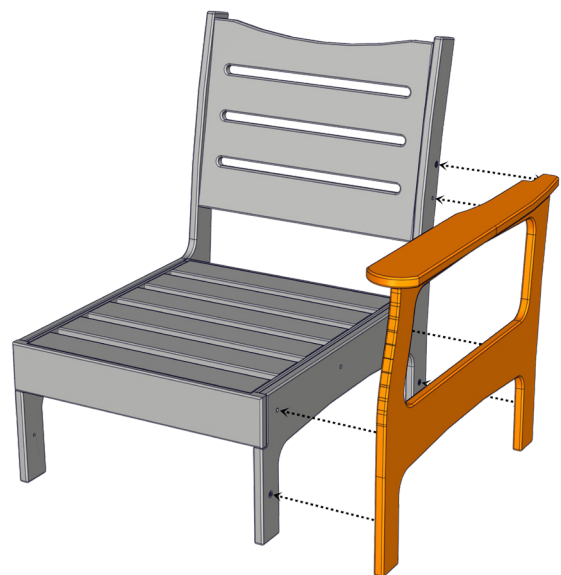
Tighten all the bolts on the chair before moving on.



## STEP 14

Repeat the end chair assembly steps but using the right side arm rest pieces this time.

You will need to build a left and a right arm chair before moving on to the next steps.



## CENTER CHAIR ASSEMBLY

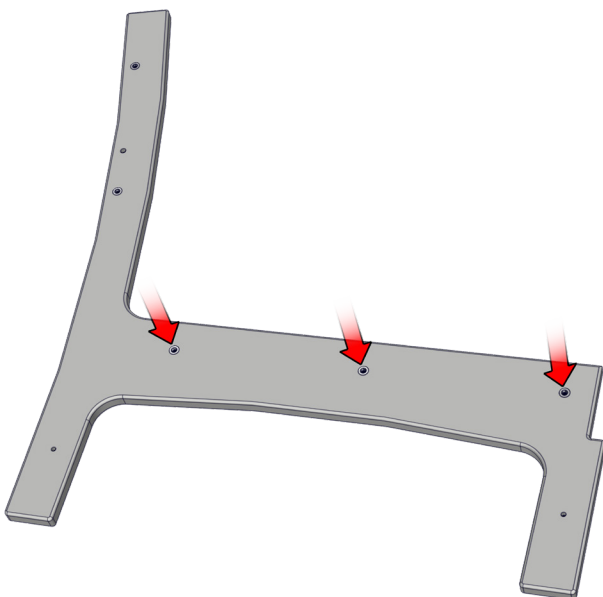
The amount of center chairs you need to build will depend on the size of your couch. The assembly instructions are the same for each chair.



### STEP 1

Begin the assembly by locating the chair side pieces. These come in a left and right version, place the right side on the ground as shown below.

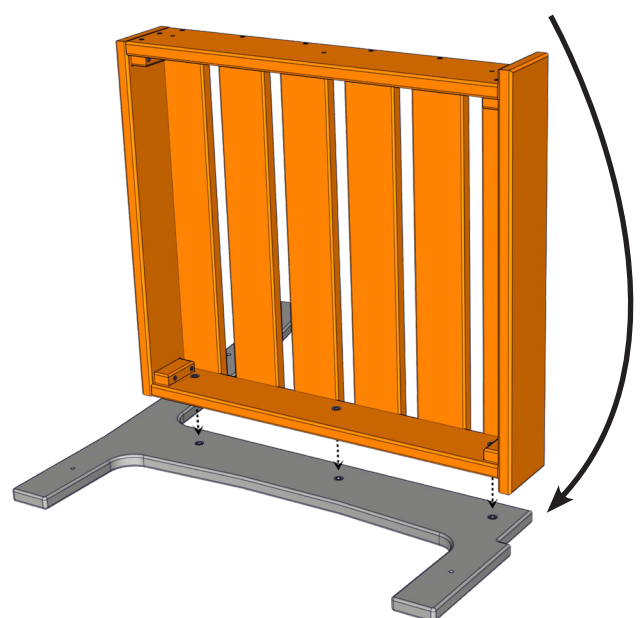
The three insert nuts for the seat should be facing up.



### STEP 2

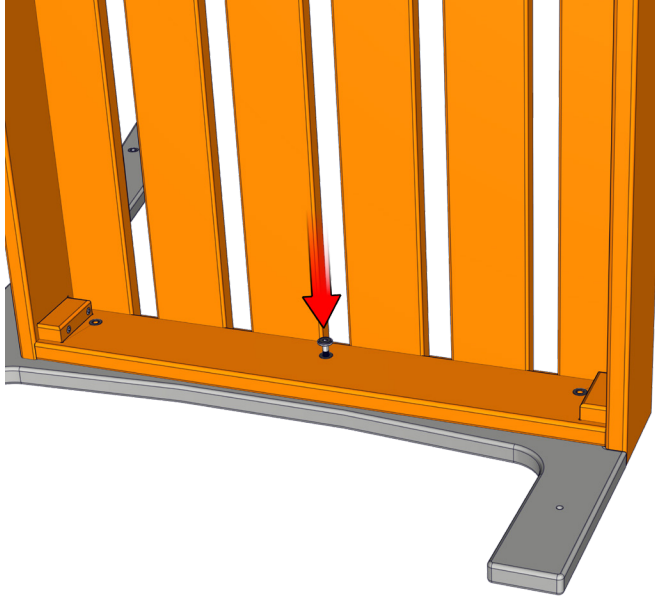
Place the seat assembly on the chair side and align the three holes.

The front of the seat assembly has a tab that will fit into the notch on the front of the chair side.



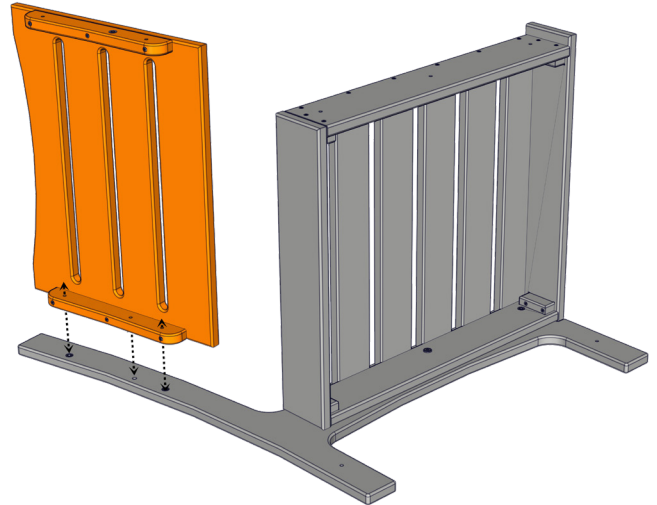
## STEP 3

Fasten the seat assembly to the chair side using one (1) 1 ¼" bolt through the center pre-drilled hole. Only finger tighten all the bolts for now.



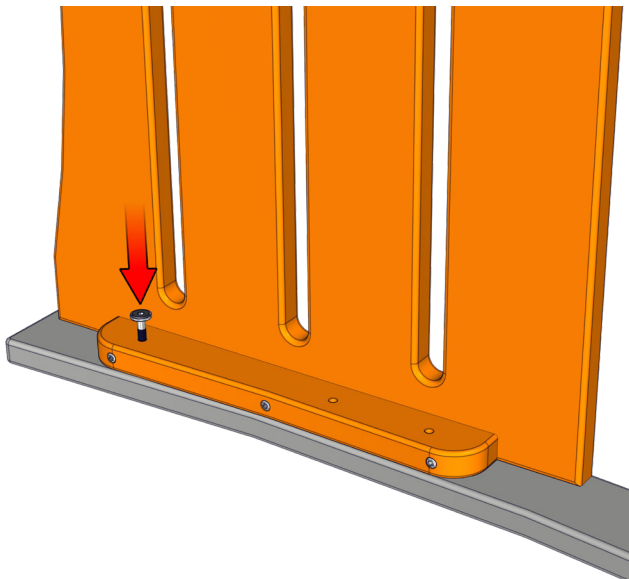
## STEP 4

Place the back assembly on the chair side and align the three holes. The top of the chair assembly is curved, make sure it is facing in the right direction.



## STEP 5

Fasten the back assembly to the chair side using one (1) 1 ¼" bolt through the top pre-drilled hole.



## STEP 6

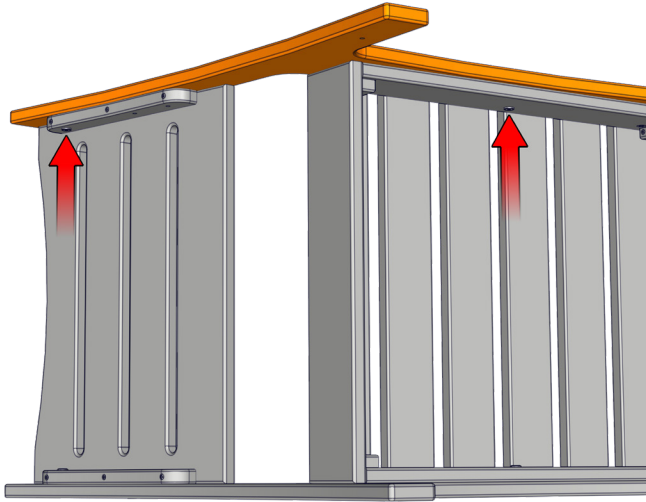
Place the left chair side in position and align the holes on the back and seat assembly.

**Note:** The nut inserts on this piece will need to be facing in towards the chair.



## STEP 7

Use two (2) 1 ¼" bolts to fasten the the chair side using the same pre-drilled holes from the previous steps. Tighten all the bolts on the chair before moving on.



## STEP 8

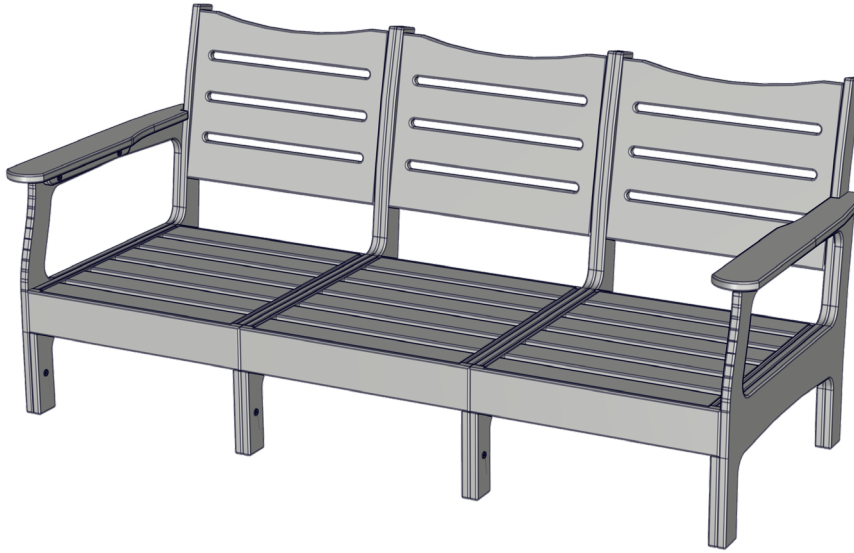
The completed center chair should match the illustration below. Continue building as many center chair as your couch needs.





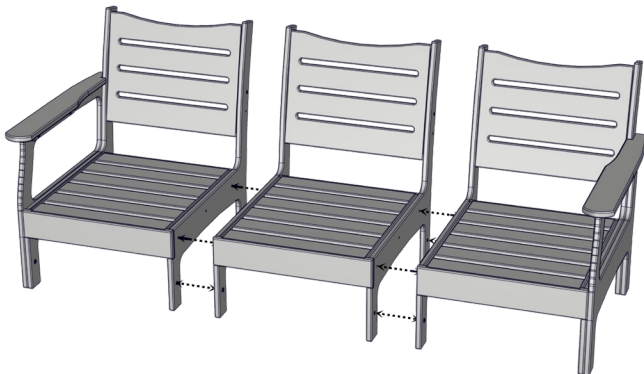
# COUCH ASSEMBLY

Continue with this section once the correct amount of end chairs and center chairs have been assembled.



## STEP 1

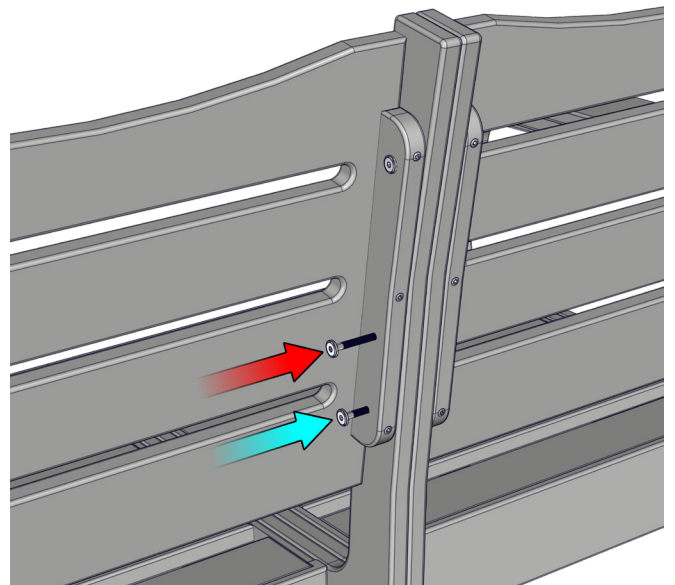
Place the correct amount of center chairs in position then place an end chair at each end. Align the holes on each chair so they fit together correctly.



## STEP 2

Fasten the back pieces together using one (1) 3" bolt through the center pre-drilled holes in the back assembly.

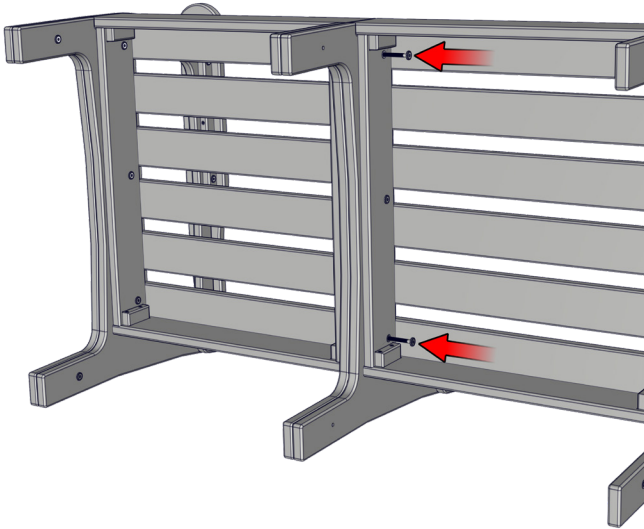
Finish fastening the back assemblies using two (2) 1 1/4" bolts through the bottom holes in each back assembly.



## STEP 3

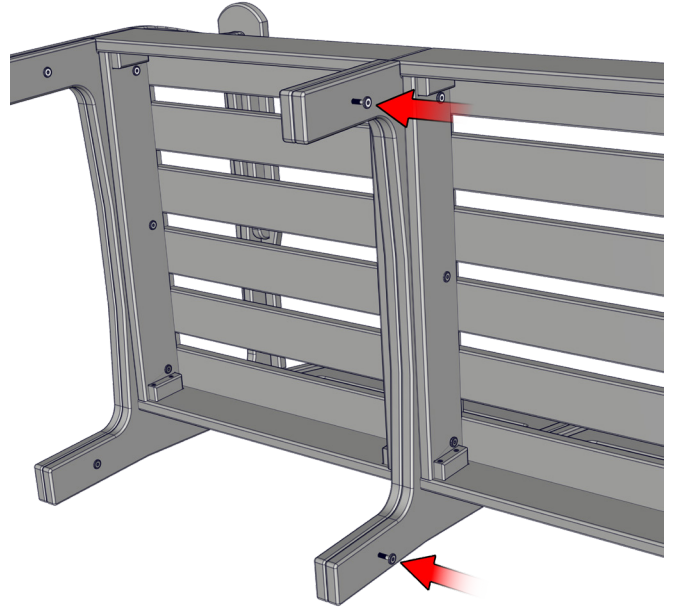
Fasten each chair assembly together using two (2) 3" bolts through the two pre-drilled holes in each seat assembly.

This step is easier done when the chairs are laying on their backs.

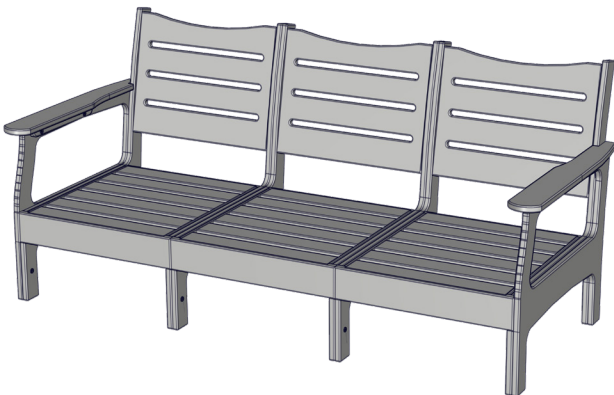


## STEP 4

Fasten the legs together using two (2) 1 ¼" bolts through the pre-drilled holes in the legs.



If you purchased a three (3) seat couch,



ASSEMBLED 3-PIECE COUCH



Corner Sectional Assembly

# Getting Started

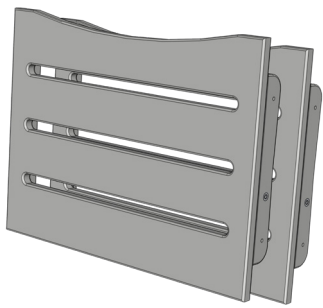
## TOOLS INCLUDED

Allen Wrench



## CORNER COUCH PARTS

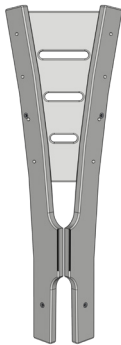
Back Assembly (2)



Seat Assembly (1)



Corner Back Assembly (1)



Leg Assembly (2)



## HARDWARE

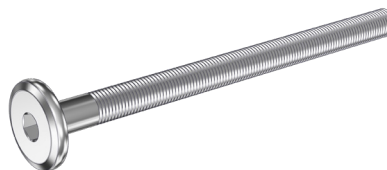
1 ¼" Bolts



2" Bolts

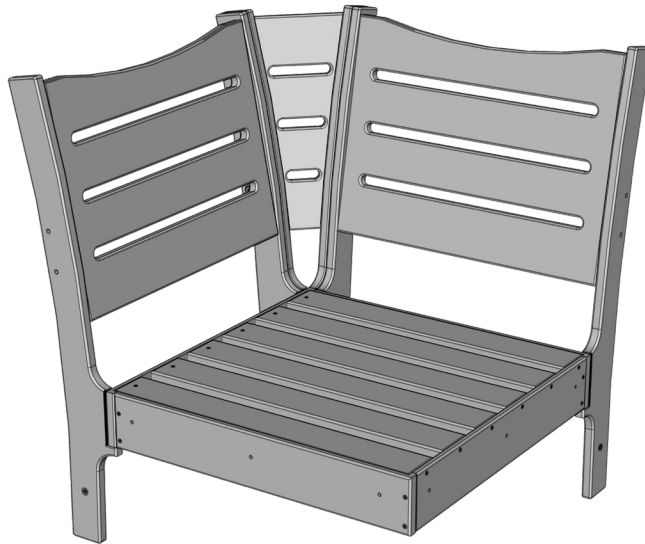


3" Bolts



## CORNER CHAIR ASSEMBLY

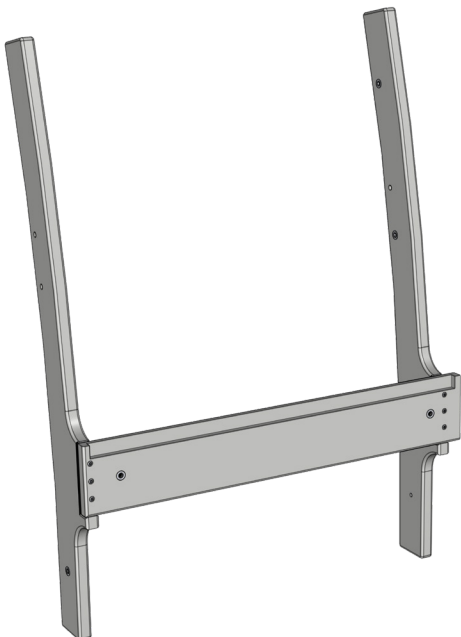
The amount of corner chairs you need to build will depend on the size of your couch. The assembly instructions are the same for each chair.



### STEP 1

Locate the left leg assembly.

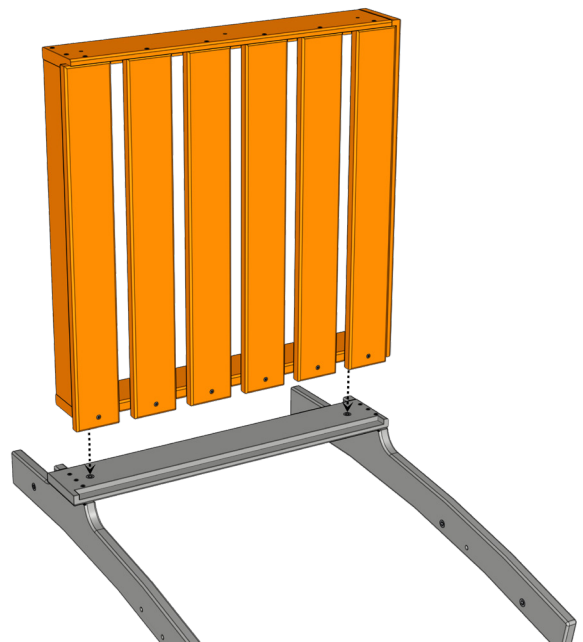
The left assembly has a closed cutout on the front instead of a open notch on the right assembly.



### STEP 2

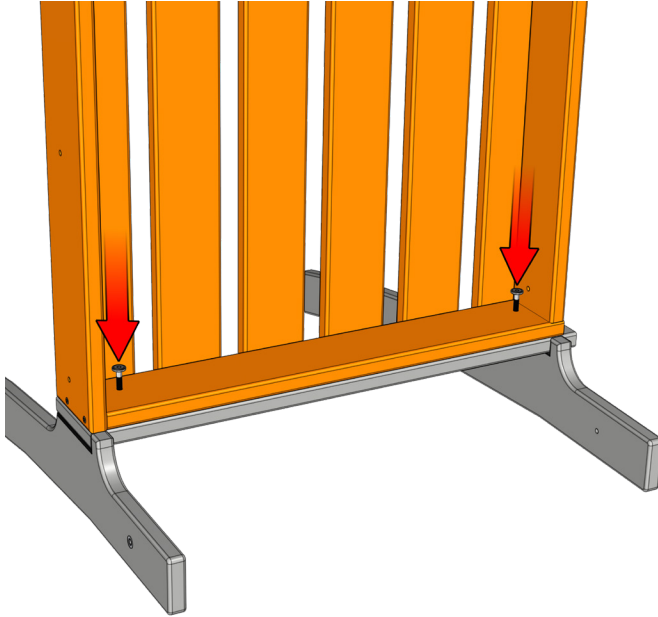
Place the leg assembly flat on the floor then place the seat assembly on top.

The extended slat ends will fit into the cutout as shown in the illustration below.



### STEP 3

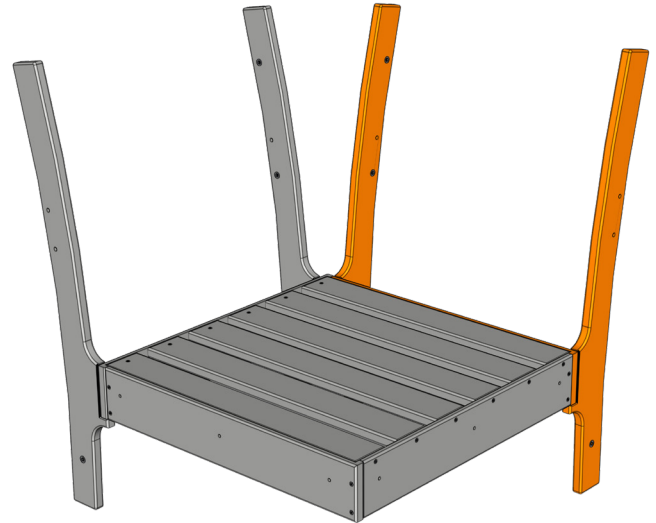
Fasten the seat assembly to the leg assembly using two (2) 1 ¼" bolts through the pre-drilled holes.



### STEP 4

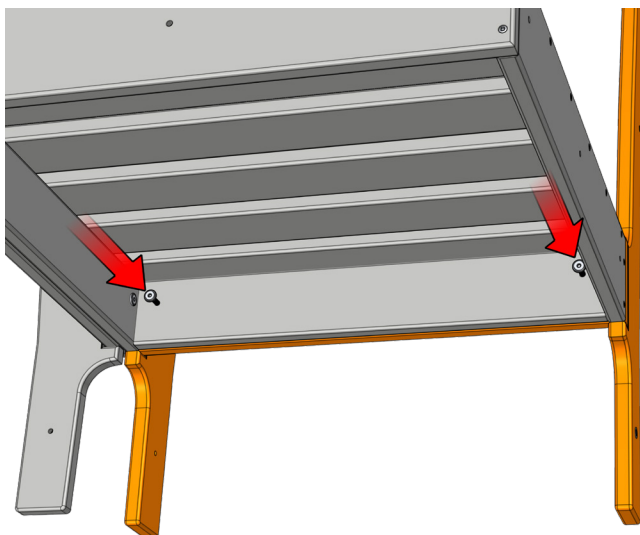
Set the chair assembly upright and place the right side leg assembly in position.

**Note:** The corner leg assemblies get fastened with two (2) bolts instead of three (3), there is only one side that the remaining leg assembly will fit correctly.



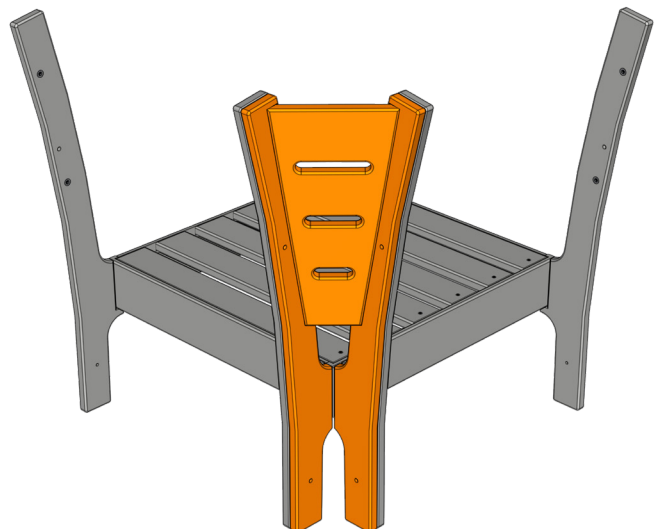
### STEP 5

Fasten the right leg assembly to the seat assembly using two (2) 1 ¼" bolts through the pre-drilled holes.



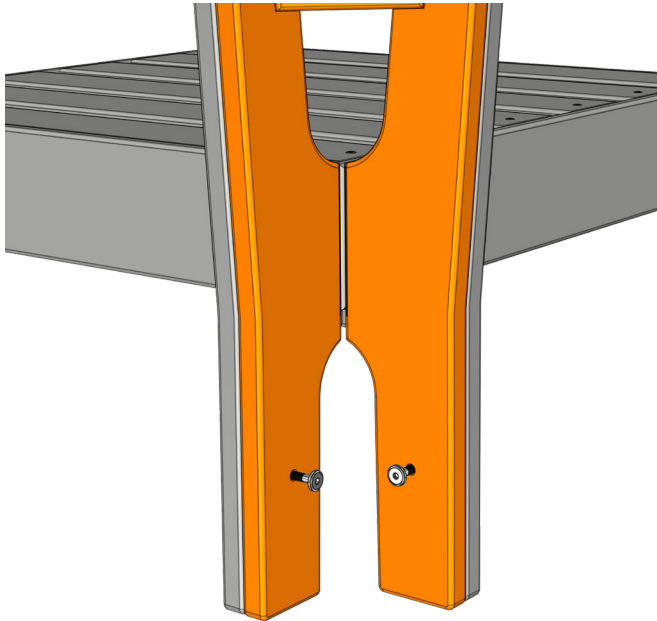
### STEP 6

Place the corner back assembly in position on the back of the chair.



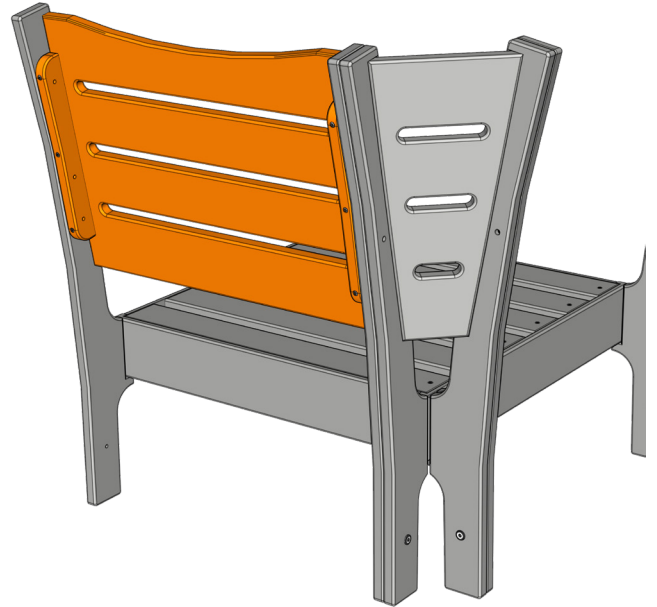
## STEP 7

Fasten the corner back assembly to the chair using two (2) 1 ¼" bolts through the pre-drilled holes.



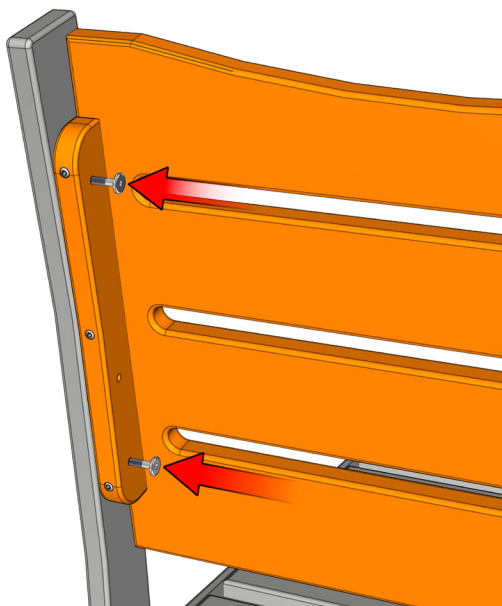
## STEP 8

Place one of the back assemblies in position on the chair and align the holes.



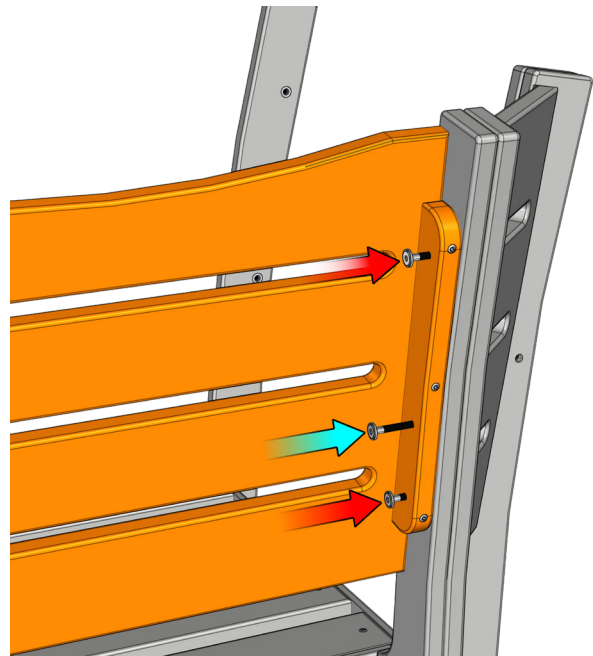
## STEP 9

Use two (2) 1 ¼" bolts to fasten the side of the back assembly away from the corner.  
Use the top and bottom pre-drilled holes.



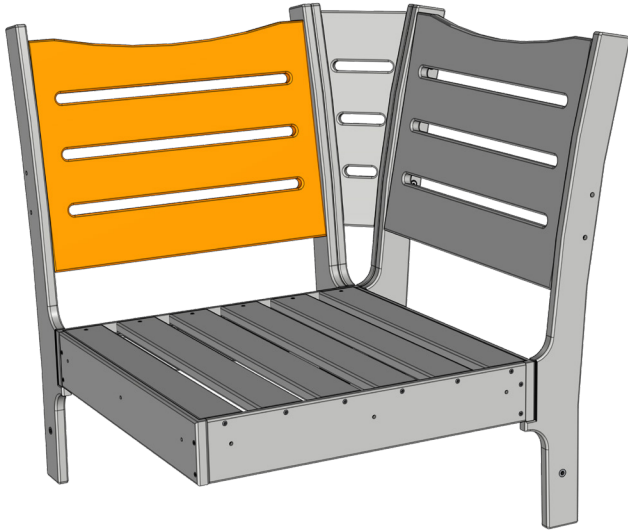
## STEP 10

Use three bolts to fasten the inside corner of the back assembly.  
The two outer holes get two (2) 1 ¼" bolts and the center hole gets one (1) 2" bolt.



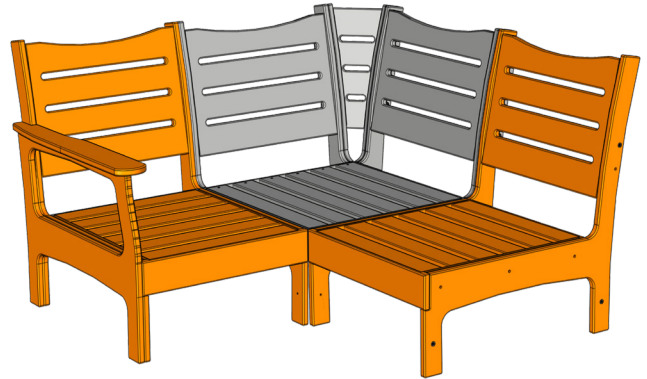
## STEP 11

Repeat steps 8 through 10 to install the back assembly on the other side.



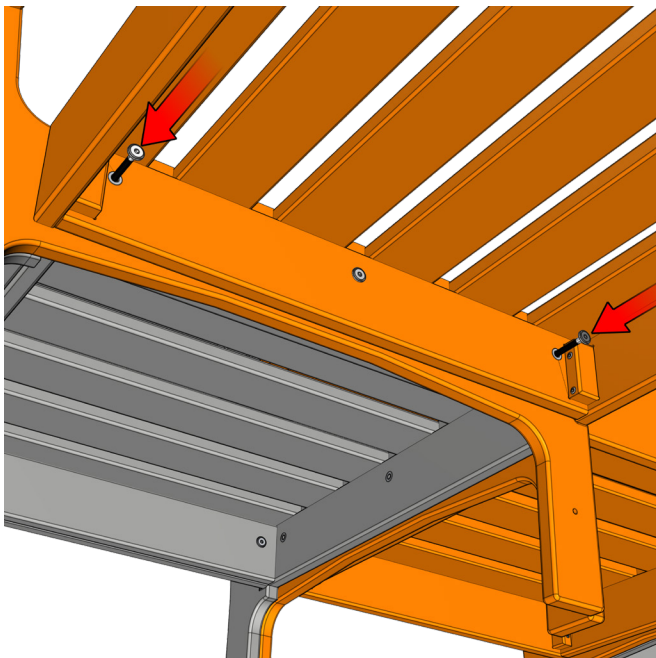
## STEP 12

Place the rest of the assembled chairs in position against the corner chair. This configuration will depend on the layout that you have purchased.



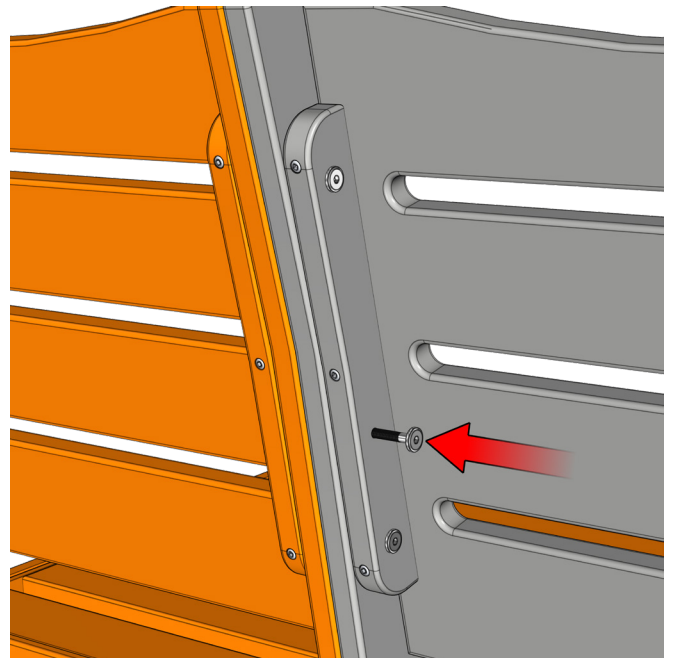
## STEP 13

Fasten the seats together using two (2) 2" bolts through the two outside pre-drilled holes in each seat assembly.



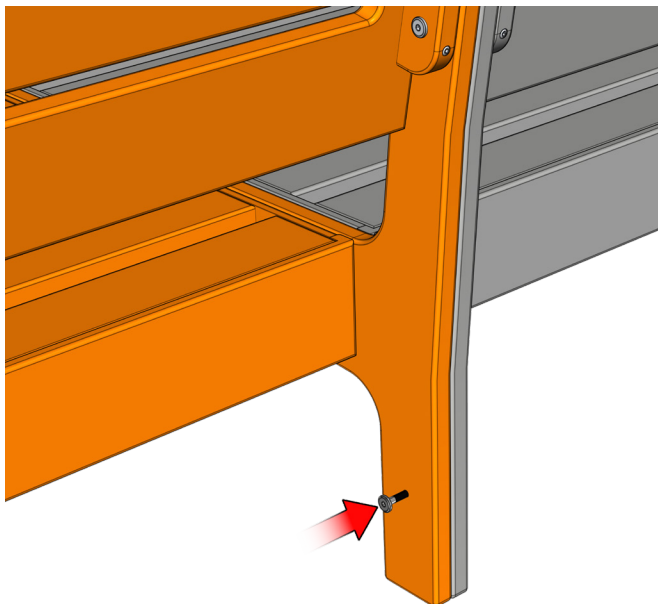
## STEP 14

Fasten the backs of the chairs together using one (1) 3" bolt through the center pre-drilled holes in each of the back assemblies.



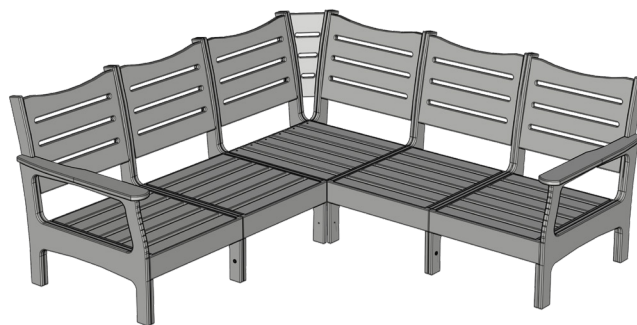
## STEP 15

Fasten the legs together using one (1) 1 ¼" bolt through the pre-drilled holes in each leg.



## STEP 16

Tighten all the bolts on the couch to finish the assembly.



Place the cushions on the couch and enjoy!





# Care & Maintenance

## POLY MATERIAL

### General Cleaning

Scrub boards with soap and water solution using a soft sponge or plastic bristled brush. You can use a soft bristled toothbrush to clean spaces that are hard to reach. To remove surface dust, hose furniture down with cold, clear water.

### Deep Cleaning

A pressure washer can be used on the lightest setting to deep clean your furniture. It is not recommended to use more than 1,500 psi. Keep the tip of the pressure washer at least 10-12 inches from the furniture so it doesn't damage the material.

For a list of specific stain removal, visit [TangentMaterials.com](http://TangentMaterials.com).

## CUSHIONS & PILLOWS

### General Cleaning

Remove any loose dirt. Prepare a mixture of cold to lukewarm water (do not exceed 100° F) and mild soap. Rub in mixture with a soft brush and allow the mixture to thoroughly soak into the fabric. Rinse well with water and air dry. Do not machine dry.

### Stubborn Stains

Remove as much surface dirt as possible. Soak fabric for 1 hour in a mixture of 1 gallon cold water, 1/2 cup bleach, and 1/2 cup mild soap.

Rub in mixture with a soft brush and rinse thoroughly with cold to lukewarm water and air-dry. Never use water over 100 degrees Fahrenheit. Do not machine dry. Detergents can be used on Outdura without harm; however, it may remove some of the water and stain resistant properties.

For more information, visit [outdura.sattler.com](http://outdura.sattler.com).

## Contact Us

Need help or have questions, we're happy to assist you. Call us at 610.857.1359 Mon-Fri 8am-5pm.